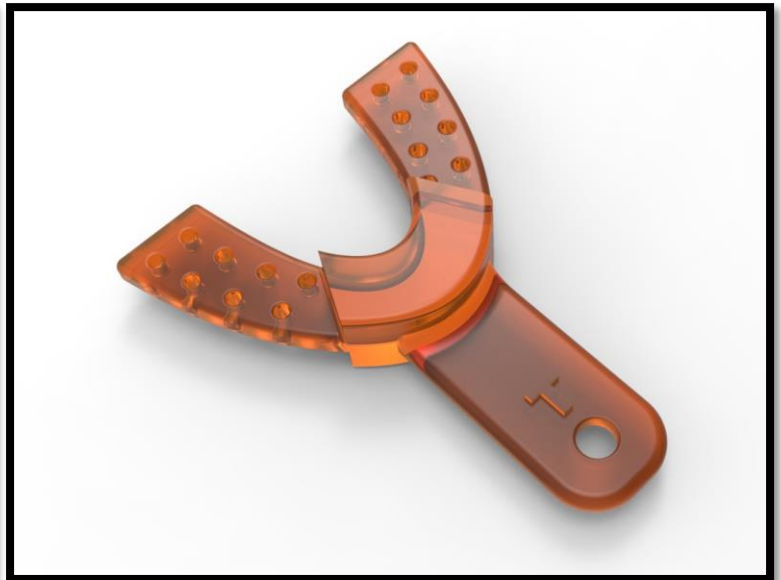
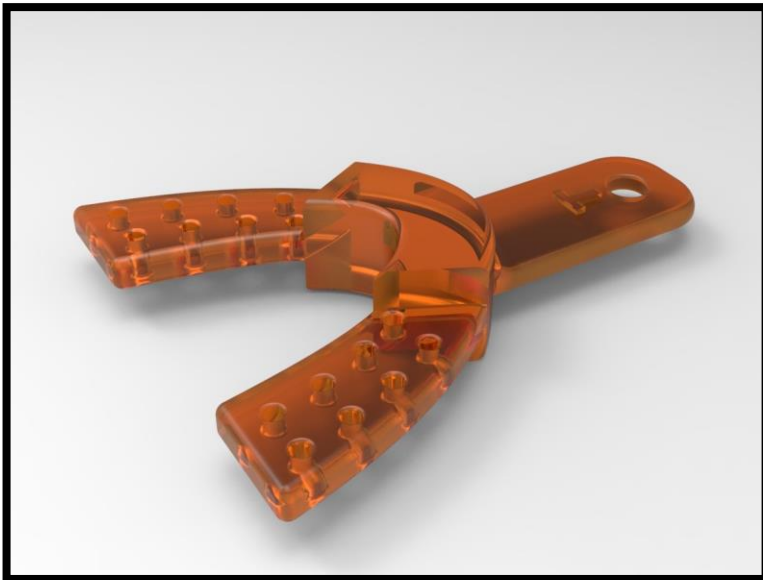




**RADTEC**  
MEDICAL  
DEVICES

# Open Bite Registration Instructions for Use



**RadTec Medical Devices Inc.**  
**170 Glenn Way Suite #5**  
**San Carlos, CA 94070**

## Instructions: how to take an open bite registration

1. Take physical molds of upper and lower teeth using impression putty, or similar materials
  - It is suggested to use quick set stone when pouring the models to expedite the final check process. It is also suggested that the final check is done when the patient is still in the office, thus saving another visit should something not work properly
2. Take the Open Bite stent with the top side up
  - Denoted with a T on the handle
  - Make sure the proper incisal opening distance has been chosen
3. Place the Open Bite Registration Device in the patients mouth and have them open and close their bite until a natural, comfortable position has been found for the positioning of the mandible
4. Using blue mouse or other injectable molding material, inject mouse along the top and bottom of each arm
  - pushing from front to back while applying slight pressure to allow mouse to work between the teeth and registration arms
5. Allow mouse to cure as recommended by manufacturer
6. Once mouse is set have patient open their bite and remove the Open Bite Registration Device
7. Place the upper and lower molds onto the Open Bite Registration Device and insure a proper fit was achieved
8. Once complete determine what method will be used to transfer device and molds to:  
RadTec Medical Devices Inc.  
170 Glenn Way Suite #5  
San Carlos, CA 94070